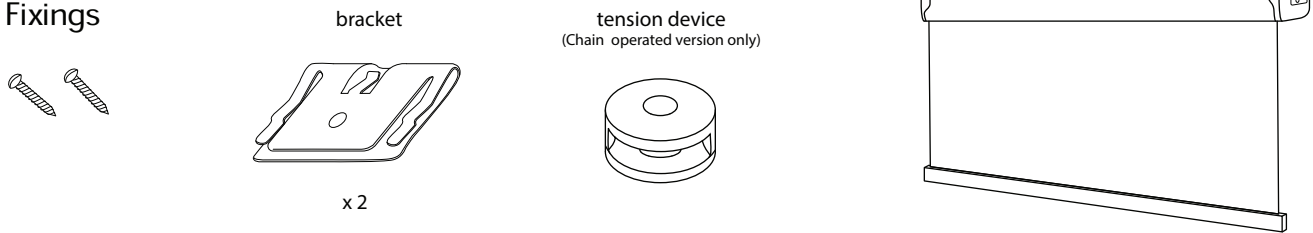


# SENSES ROLLER SYSTEM BLIND FITTING INSTRUCTIONS

Your blind will be supplied with the appropriate brackets and screws.

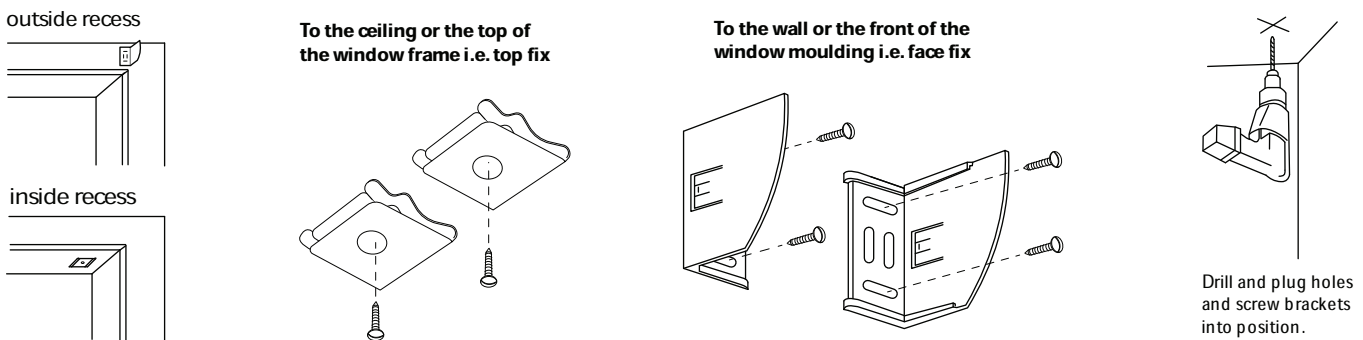
## 1. Fixings



## 2. Fixing your brackets

The top fix brackets should be fixed to the ceiling/top of a reveal. Please ensure the holes are drilled in a straight line. When marking out where brackets are to go, please bear in mind that end brackets should be about 100mm from the ends of the fascia. Depending on the width of your blind you may be supplied with additional brackets - these should be spaced evenly along the width of the blind.

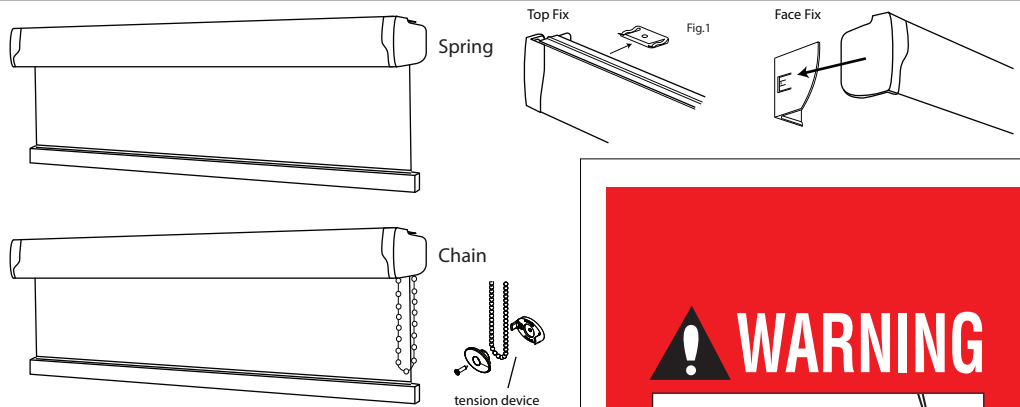
Face Fix: The face fix bracket slide over the endcaps on the fascia system. please ensure this is taken into account when marking out the brackets for fitting.



## 3. Installing your blind

**Top Fix:** Line the top of the fascia up with the installed brackets. Push the fascia towards the bracket until they are clipped in securely. To remove the blind tilt the fascia down and towards the window and pull towards you to release from the brackets.

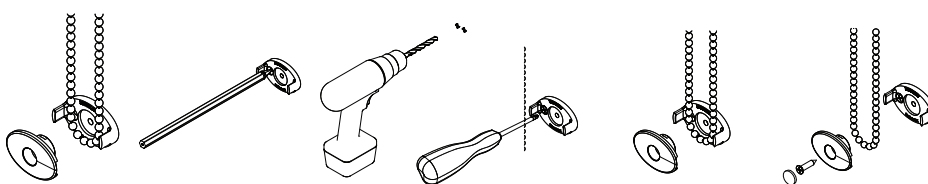
**Face Fix:** When all brackets have been fitted insert blind by lining up fascia end caps with slots on fixing brackets. Adjustment of fascia end caps can be used to aid this process. When both sides have been located ensure blind is pushed fully home until locks on both the fixing brackets and centre support. To remove the blind simply use a flat blade screwdriver, release locking clip by inserting screwdriver between bracket and end cap.



## 4. Installing the tension device

This tension device reduces the hazards of strangulation and entanglement of young children by limiting access to the control chain. Fit the tension device as per the diagrams below.

Please ensure you fit this Tension Device at the maximum vertical distance from the control mechanism to prevent the chain from becoming slack.



## 5. Use of the control chain to operate your blind

Pulling gently on the chain in one direction raises the blind, pulling it in the other direction lowers it. The front of the chain does the rise.

# WARNING

Young children can be strangled by loops in pull cords, chains, tapes and inner cords that operate the product. To avoid strangulation and entanglement, keep cords out of the reach of young children. Cords may become wrapped around a child's neck. Move beds, cots and furniture away from window covering cords. Do not tie cords together. Make sure cords do not twist and create a loop.

